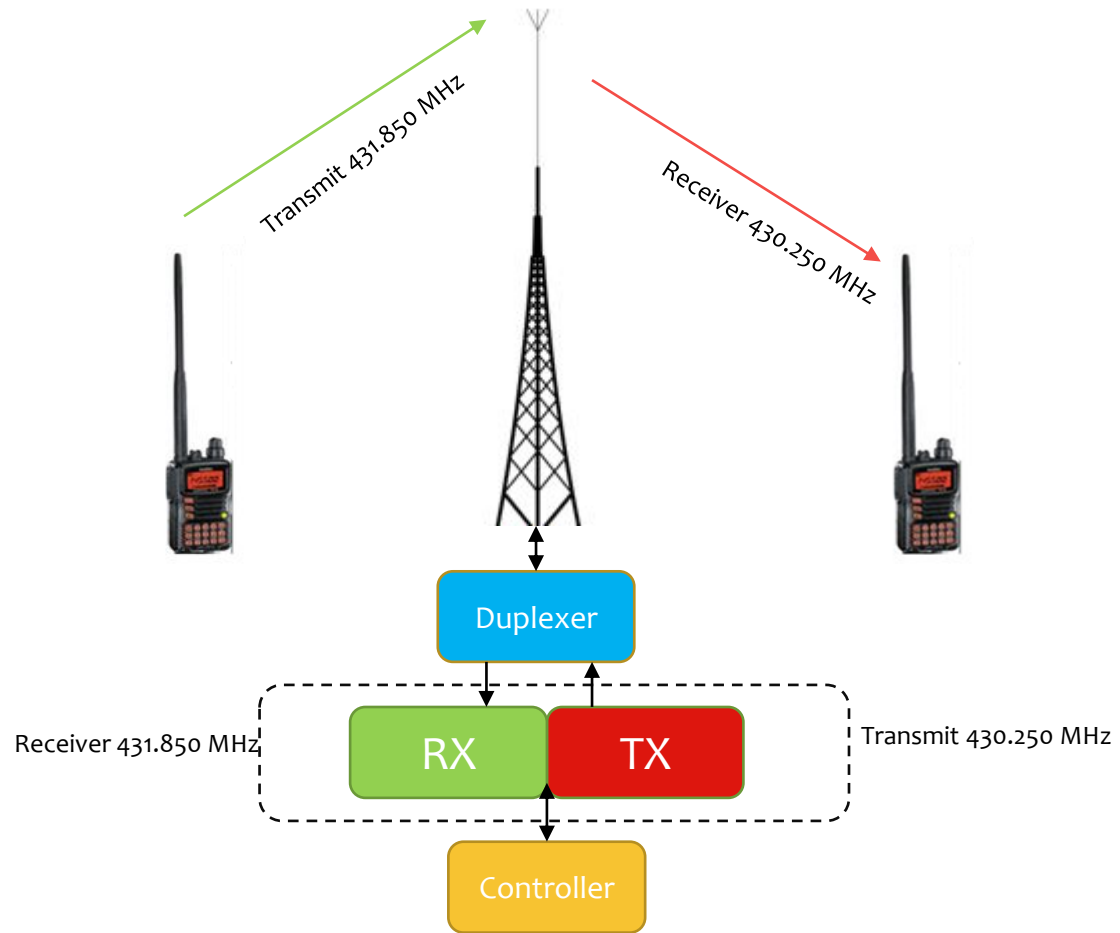


The image features a background of a circuit board with various traces and circular components. A dark horizontal band runs across the middle of the image, containing the text. The circuit board design includes several circular pads, some of which are connected to traces. The overall aesthetic is technical and modern.

PI2AMF Repeater

Schematische opzet PI2AMF



Oude opstelling

AEG



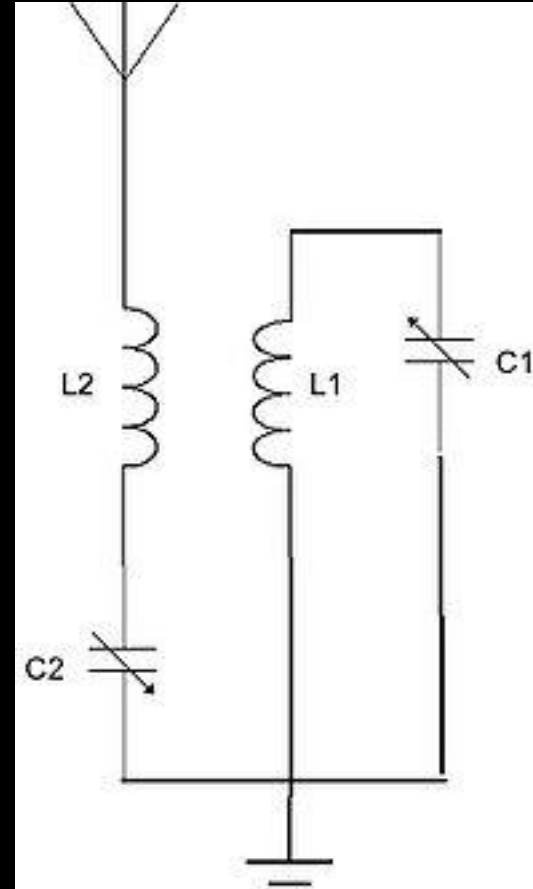
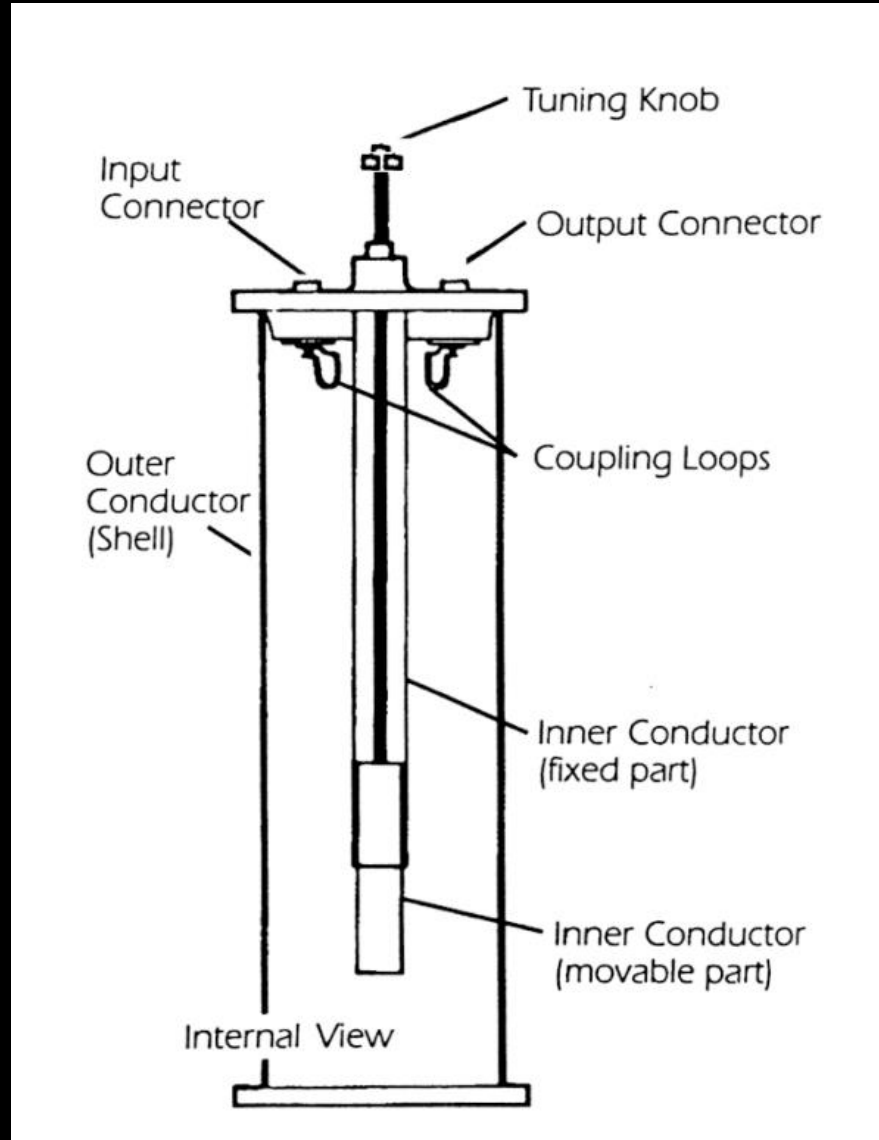
Zenden en Ontvangen tegelijkertijd

Zenden met bv. 20 Watt = 43 dBm = 31 Volt (50Ω)

Willen ontvangen met 0.000 000 5 V = -113 dBm

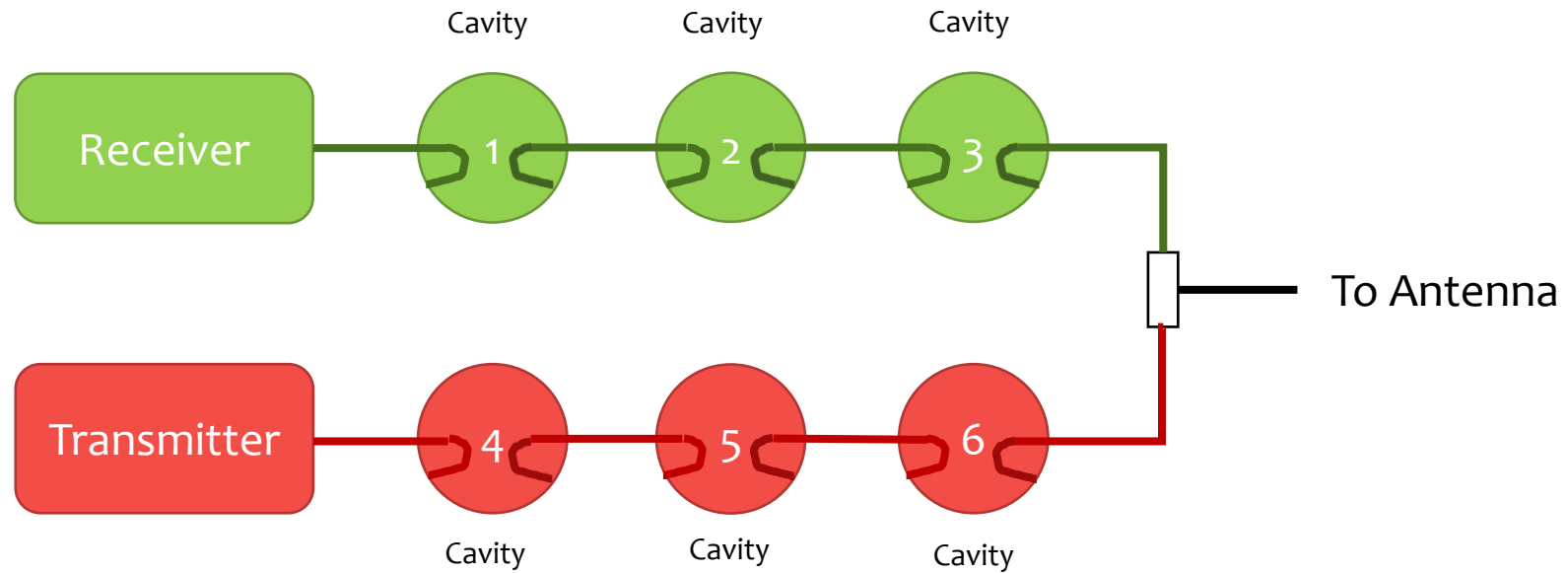
Goede filters nodig

Cavity Filter

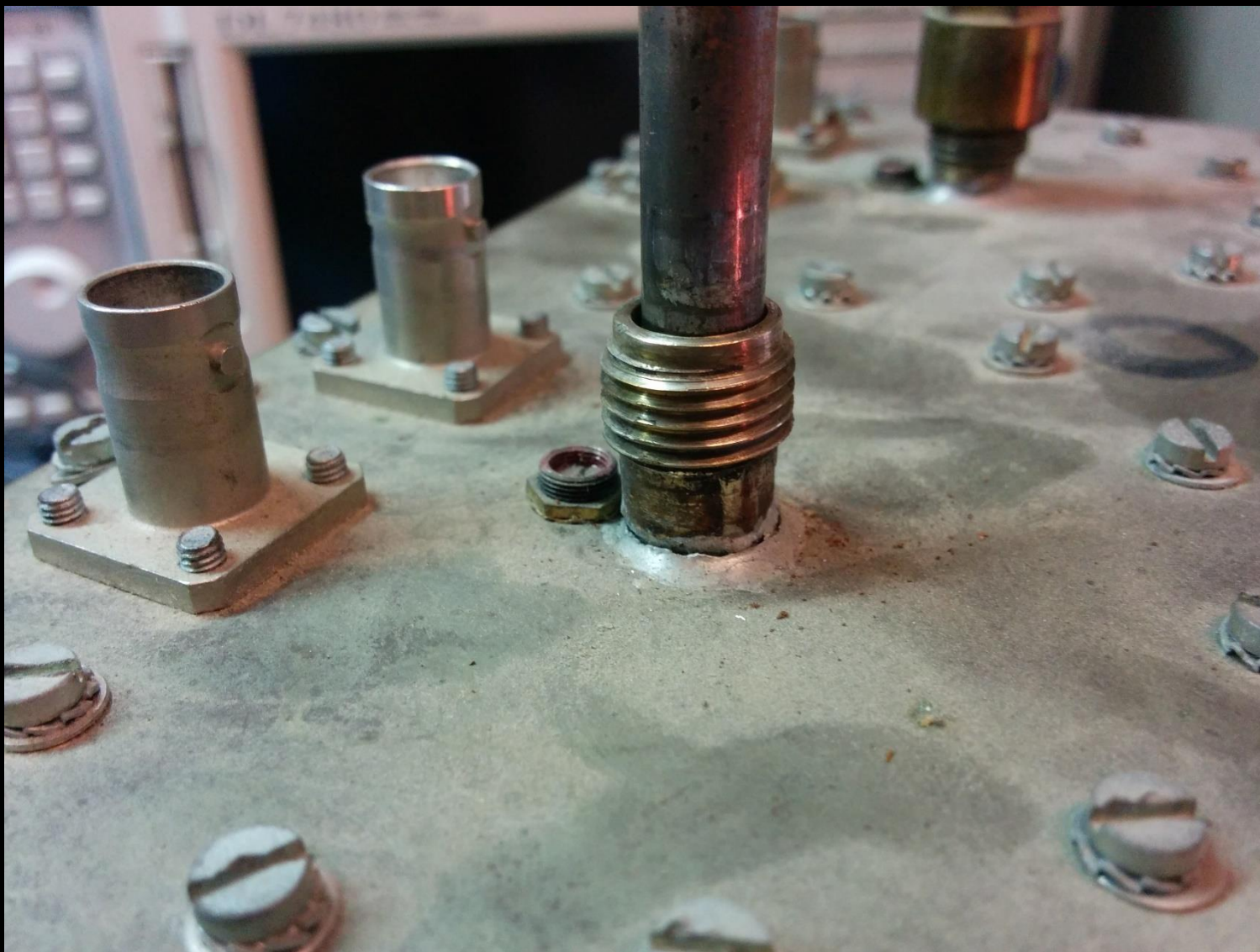


Voordeel is hoge Q factor

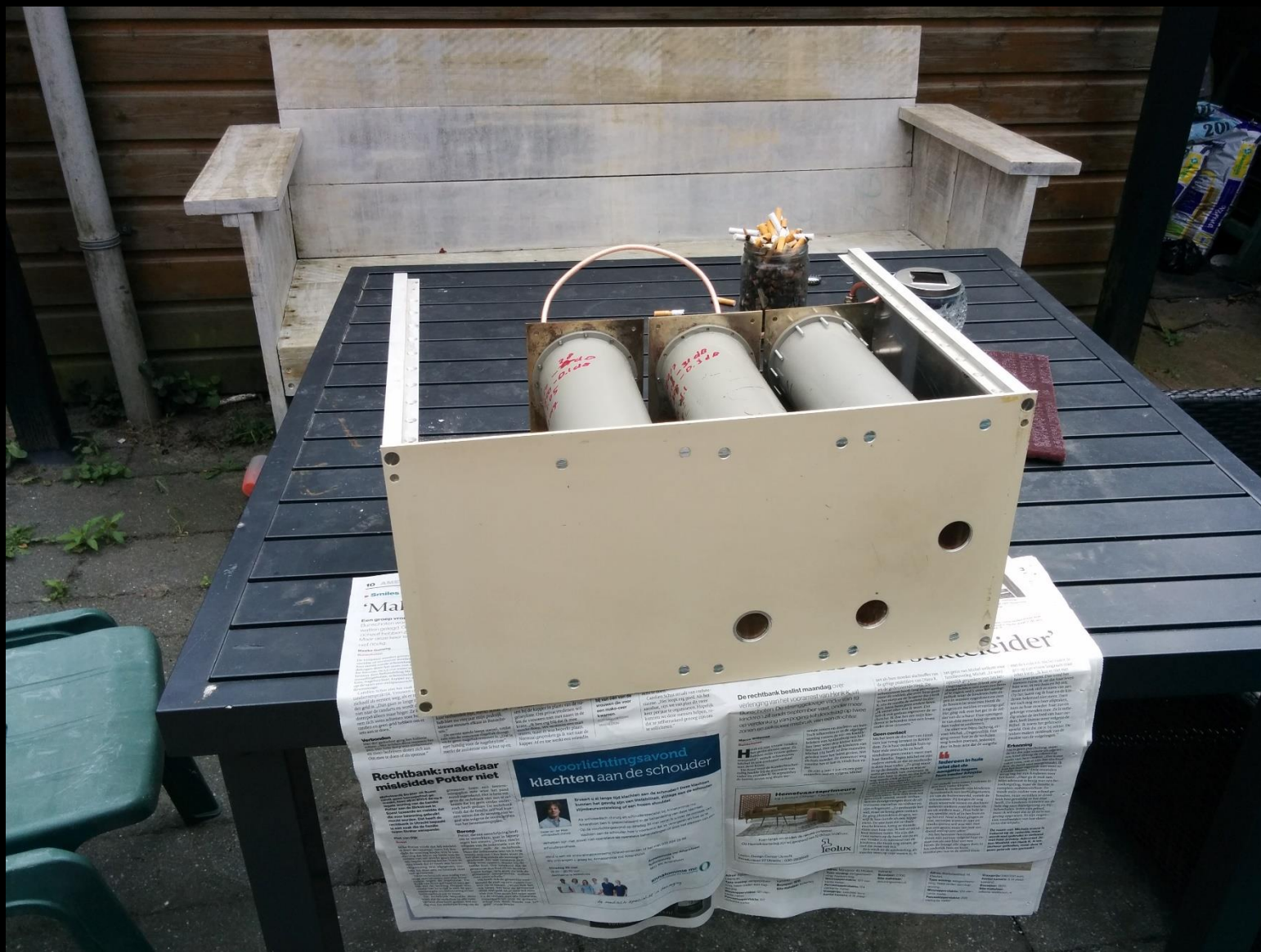
Use of Duplex Filters



Revisie Duplex Filter

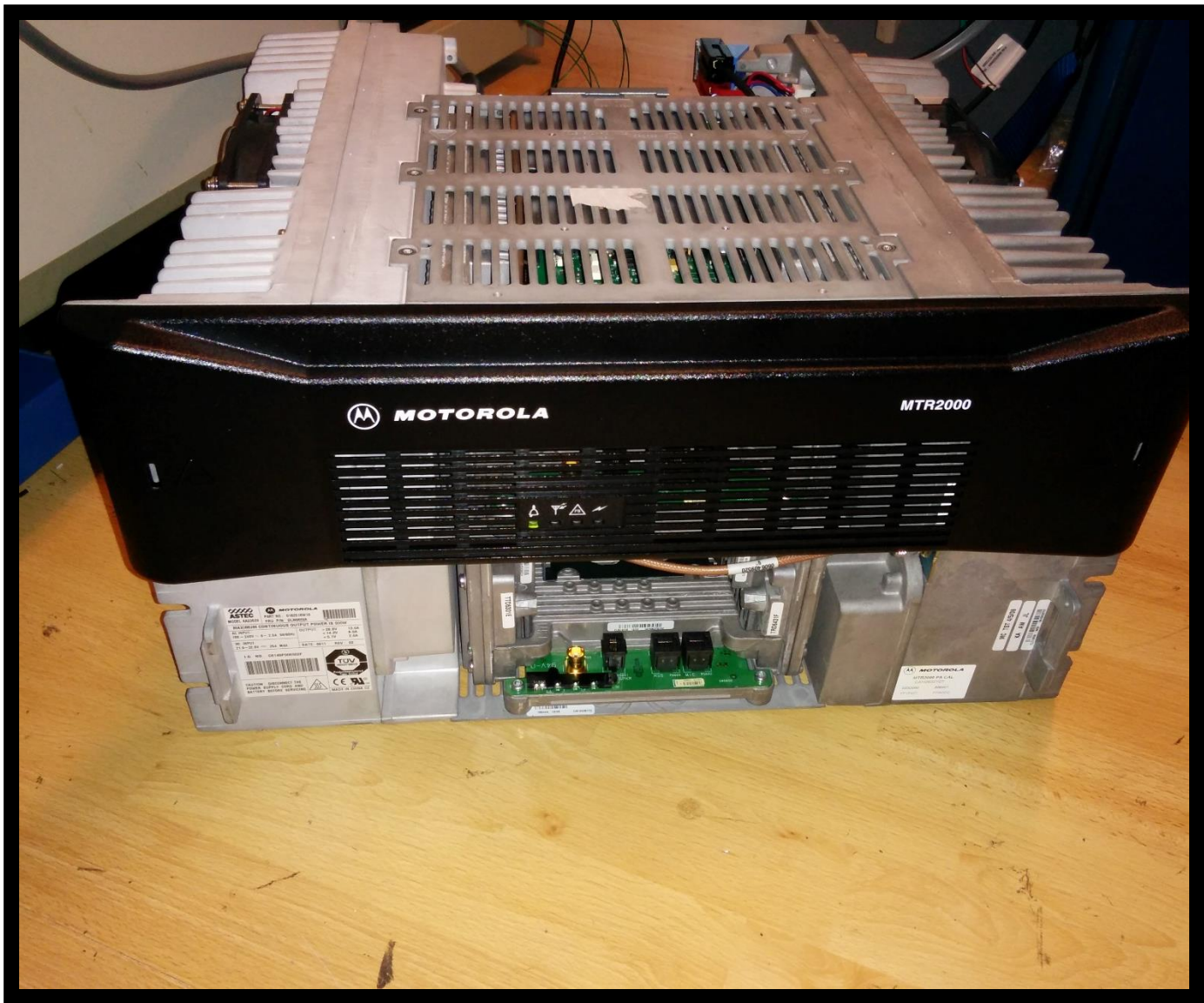


Na afregelen een verf beurtje

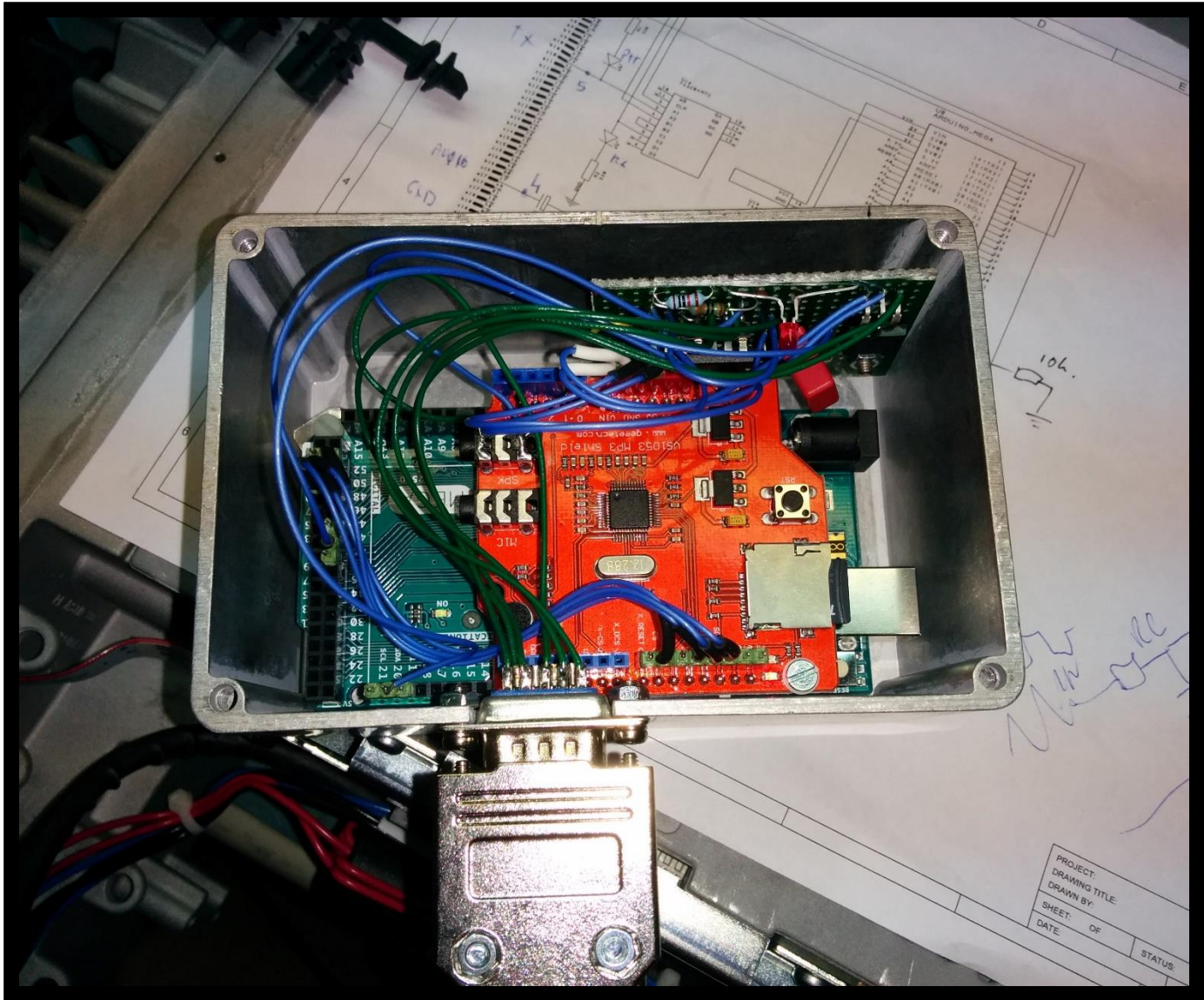


Kleurtje gegeven





De Repeater
Motorola
MTR2000



Interface met
Arduinio en
MP3 speler

PROJECT:	
DRAWING TITLE:	
DRAWN BY:	
SHEET:	OF
DATE:	
	STATUS:

File Edit Sketch Tools Help



PI2AMFRelais1Mega

```
9
10 const int TXPin = 40;           // the number of the TX pin
11 const int RXPin = 20;           // the number of the RX pin
12 const int pina = 9;
13 const int pinb = 11;
14 const int pinc = 12;
15 const int pind = 13;
16 int Beep;
17 int RogerBeep=0;                // rogerbeep
18 int uitleg;
19 int japans;
20 Timer t;
21 const int chipSelect = 49;
22 void setup() {
23   pinMode(TXPin, OUTPUT);        // initialize the TX pin as an output 1=TX ON
24   pinMode(RXPin, INPUT);        // initialize the RX pin as an input:
25   pinMode(pina, INPUT);
26   pinMode(pinb, INPUT);
27   pinMode(pinc, INPUT);
28   pinMode(pind, INPUT);
29   Serial.begin(9600);           // voor debugging
30
31   //start the shield
32   sd.begin(SD_SEL, SPI_HALF_SPEED);
33   MP3player.begin();
34   MP3player.setVolume(15,15);
35   t.every(300000, CallGever);    // callgever event interrupt 300000
36   digitalWrite(TXPin, LOW);     // set TX OFF
37   attachInterrupt(3, RXinterrupt, HIGH); // event interrupt for RX
38 }
39
40
41 void loop() {
42   t.update();
43
44   if (digitalRead(RXPin)==HIGH){ // check rx is on
45     do{
46     } while (digitalRead(RXPin)==HIGH); // check rx goes low
47     digitalWrite(TXPin, HIGH);
48     MP3player.playTrack(3);
49     delay(250);
50     digitalWrite(TXPin, LOW);
51   }
52 }
53
54
55
```

Software voor de Arduino



Monteren Interface

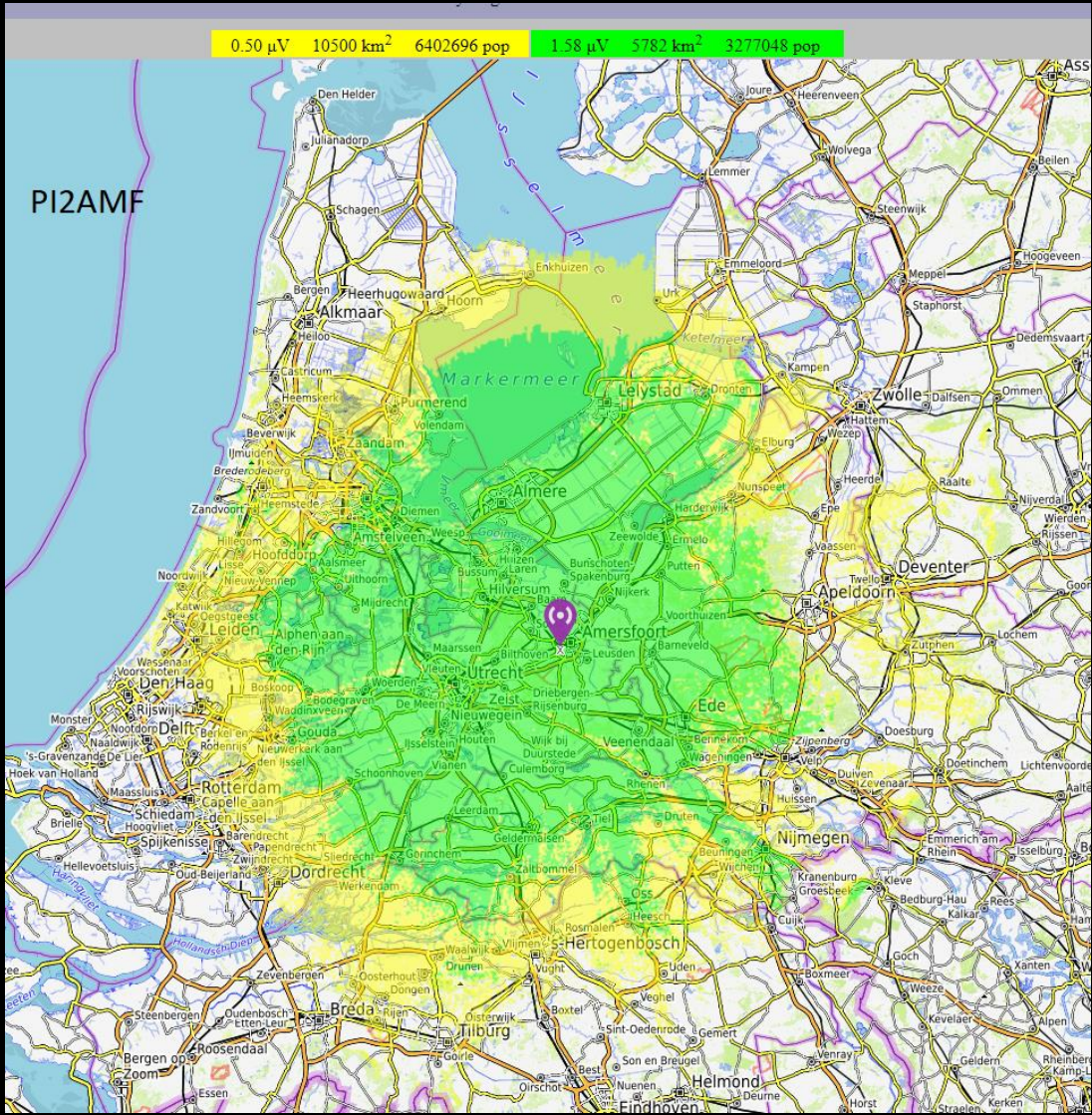
Zender Berghotel Motorola MTR2000



23 CM Relais

70 cm Relais

2 m Relais



Repeater
bereik
PI2AMF

Frequentie en sub-audio

PI2GRG	Groningen	430.2575	82.5
PI2HLM	Haarlem	430.2500	88.5
PI2AMF	Amersfoort	430.2500	77.0
PI2BRM	Breda	430.2500	77.0

Doordat we overlap hebben met PI2HLM gebruiken we sub-audio

Roger beep is gebaseerd op de Apollo project.

Grapje

PI2AMF is de enige repeater die identificeert in het Japans.

ca. 2x per dag

Einde Repeaters?

De Amersfoortse Repeaters worden in December 2021 uitgezet.

Vanwege weinig gebruikers en hoge kosten.

Bedankt voor uw aandacht